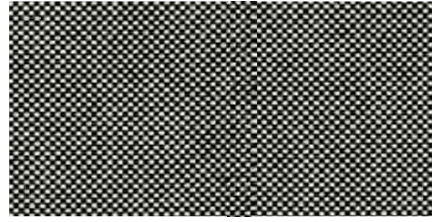


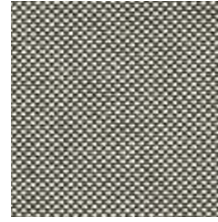
TESSUTO kvadrat FIELD

kvadrat FIELD FABRIC | kvadrat FIELD TISSU | STOFF kvadrat FIELD | TEJIDO kvadrat FIELD | ТКАНЬ kvadrat FIELD

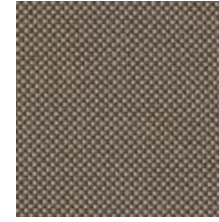
BONTEMPI
CASA



TKF01 Sale & pepe | Salt & pepper | Sel & poivre | Salz & Pfeffer |
Sal & pimenta | Соль и перец



TKF02 Sabbia | Sand | Sable | Sand |
Arena | Песочный



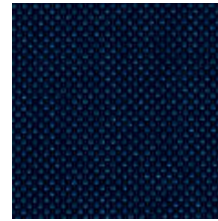
TKF09 Tortora | Dove gray |
Gris tourterelle | Taubengrau |
Gris ceniciento | Серо-Коричневый



TKF07 Corteccia | Bark | Écorce |
Braun-grün | Corteza |
Коричневый - Зелёный



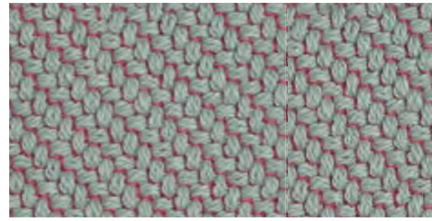
TKF08 Bordeaux | Bordeaux |
Bordeaux | Bordeaux | Burdeos | Бордо



TKF06 Blu indaco | Indigo blue |
Bleu indigo | Bleu | Azul indigo |
Синий индиго

TESSUTO kvadrat CODA

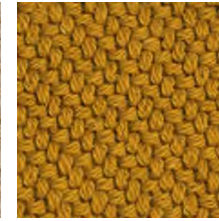
kvadrat CODA FABRIC | kvadrat CODA TISSU | STOFF kvadrat CODA | TEJIDO kvadrat CODA | ТКАНЬ kvadrat CODA



TKC03 Celeste | Light blue | Bleu ciel | Hell blau | Celeste | Голубой



TKC01 Mandorla | Almond | Amande |
Mandel | Almendra | Миндаль



TKC02 Giallo senape |
Mustard yellow | Moutarde |
Senf | Amarillo mostaza |
Желтая горчица



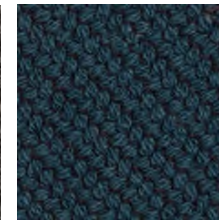
TKC04 Salmone | Salmon | Saumon |
Lachs | Salmón | Семга



TKC05 Verde salvia | Sage green |
Vert sauge | Salbei grün |
Verde salvia | Зеленый шалфей



TKC07 Talpa | Grey | Gris | Grau |
Gris | Серовато-Коричневый



TKC06 Denim | Denim | Bleu denim |
Denim | Denim | Деним

0 kvadrat

TESSUTO kvadrat FIELD

kvadrat FIELD FABRIC | kvadrat FIELD TISSU | STOFF kvadrat FIELD | TEJIDO kvadrat FIELD | ТКАНЬ kvadrat FIELD

COMPOSIZIONE | COMPOSITION
100% Trevira® CS

SIMBOLOGIA | LIST OF SYMBOLS



RITIRO STIMATO | ESTIMATED SHRINKAGE
2%

ALTEZZA | WIDTH
140 cm | 55.1 inch

SOLIDITÀ DEL COLORE ALLA LUCE | COLOUR FASTNESS TO LIGHT
5/7 ISO 105 B02

RESISTENZA AL PILLING | PILLING RESISTANCE
4/5 EN ISO 12945

RESISTENZA ALL'ABRASIONE | ABRASION RESISTANCE
100.000 cicli-rubs martindale EN ISO 12947



IGNIFUGO | FIRE RETARDANT
T UNI 9177 Class 1 DE/EU DIN 4102 B1
GB BS 5852 Crib 5 EU EN 1021-1/2
FR NF P 92 507 M1
AT Önorm B1/Q1
U.S.A US Cal. Bull. 117-2013 IMO FTP Code 2010:Part 8



METODO DI PULIZIA | CLEANING INSTRUCTIONS
Per la pulizia, utilizzare un panno di cotone inumidito con acqua.
For cleaning, use a cloth dampened with water.

TESSUTO kvadrat CODA

kvadrat CODA FABRIC | kvadrat CODA TISSU | STOFF kvadrat CODA | TEJIDO kvadrat CODA | ТКАНЬ kvadrat CODA

COMPOSIZIONE | COMPOSITION
90% lana vergine | virgin wool | laine vierge-reine Schurwolle | lana virgin | Натуральная шерсть
10% nylon | nylon | nylon | nylon | nylon | Heўлон

SIMBOLOGIA | LIST OF SYMBOLS



ALTEZZA | WIDTH
140 cm | 55.1 inch

SOLIDITÀ DEL COLORE ALLA LUCE | COLOUR FASTNESS TO LIGHT
5/7 ISO 105 B02

RESISTENZA AL PILLING | PILLING RESISTANCE
4 EN ISO 12945

RESISTENZA ALL'ABRASIONE | ABRASION RESISTANCE
100.000 cicli-rubs martindale EN ISO 12947



IGNIFUGO | FIRE RETARDANT
IT UNI 9175 11M DE/EU DIN 4102 B2 GB BS 5852 part 1 EU EN 1021-1/2
FR NF D 60 013
AT Önorm B2/Q1
U.S.A US Cal. Bull. 117-2013
NFPA 260
IMO FTP Code 2010:Part 8



METODO DI PULIZIA | CLEANING INSTRUCTIONS
Rimuovere polvere e residui utilizzando un aspirapolvere a bassa intensità.
Remove dust and dirt using a low-power vacuum.